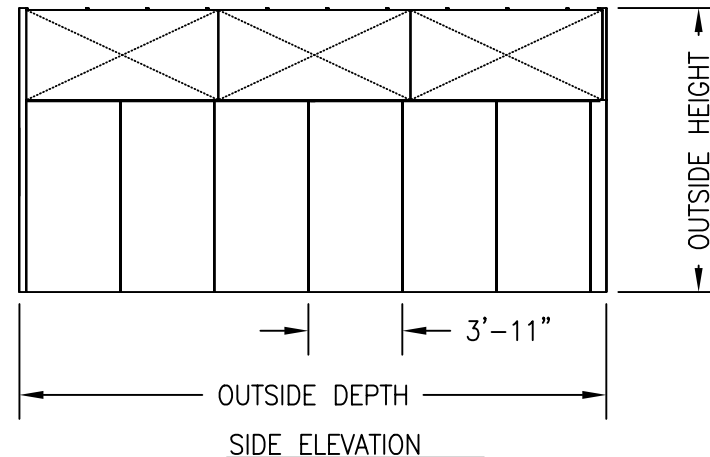
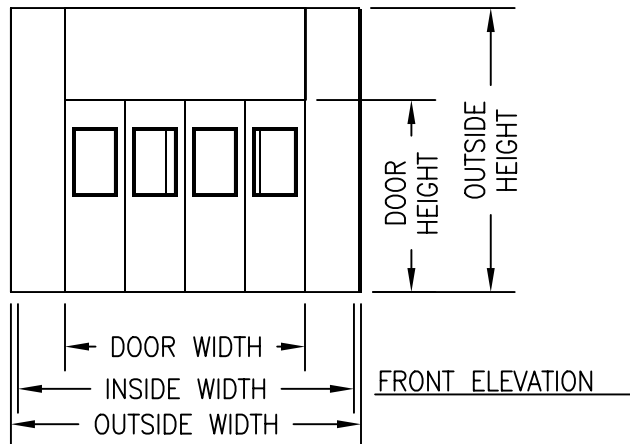
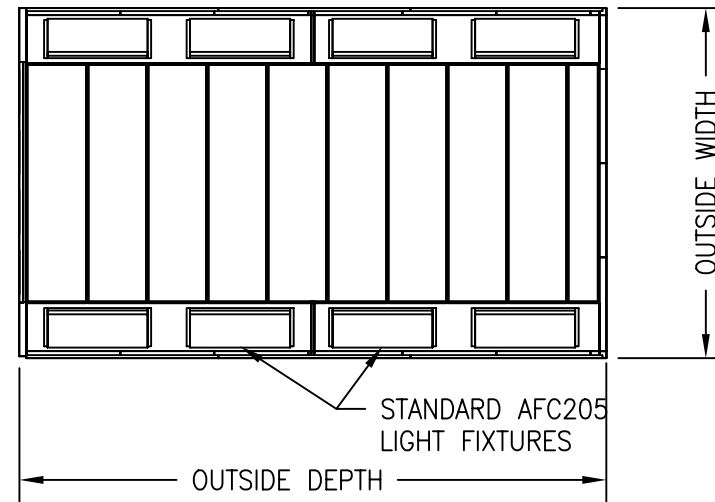


AUTO THERMAL XTREME SPRAY BOOTH

ALL PANELS ARE CONSTRUCTED OF 18GA (0.0478") GALVANIZED STEEL. ALL ANGLES ARE CONSTRUCTED OF 14GA (0.0747") GALVANIZED STEEL. WHEN REQUIRED, SUPPORT STRUCTURES (C-CHANNELS, I-BEAMS, & T'S) ARE CONSTRUCTED OF 12GA (0.1046") GALVANIZED STEEL UNLESS STATED OTHERWISE.

AFC SPRAY BOOTHS ARE CONSTRUCTED TO THE STANDARDS OF THE NATIONAL FIRE PROTECTION AGENCY (NFPA-33), OCCUPATIONAL HEALTH AND SAFETY ADMINISTRATION (OHSA), AND ENVIRONMENTAL PROTECTION AGENCY (EPA).

FINAL ASSEMBLY AND INSTALLATION, WIRING, AND FIRE SUPPRESSION ARE DONE BY OTHERS (NOT AFC) AND MUST BE DONE IN ACCORDANCE WITH NATIONAL SAFETY CODES UNLESS SAY OTHERWISE BY LOCAL AUTHORITY HAVING JURISDICTION.



STANDARD BOOTH INFORMATION:

OUTSIDE DIMENSION	14'7"w x 24'7"d x 11'10"h
INSIDE DIMENSION	14'0"w x 24'0"d x 10'0"h
ACCESS DOORS	ONE INTEGRAL WITH DRIVE DOOR, ONE 36"w x 84"h
DRIVE-IN DOORS	11'0"w x 8'0"h, BI-FOLD WITH INTEGRAL 30"w x 96"h ACCESS DOOR
AIR MAKE-UP	AMS1000E, VARIABLE SPEED
AIR FLOW	14,000 CFM
BASEMENT	SEP200 PIT OR RAISED FLOOR



AIR FILTRATION CO., INC

250 AIRPORT PARKWAY, OROVILLE, CA 95965
(800) 331-7744 (530) 533-0179 (FAX)

This drawing is the property of AFC, inc. and is not to be used unless in direct connection with AFC, inc. All right reserved.

Drawn by:

Y T

Dwg No:

ATE2xxxE

Rev:

Date:

4/30/01

Scale:

1/8"=1'-0"

Sheet: